

HWBB Enfield

COVID Vaccination

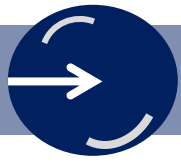
**Phase 3 COVID and Flu
ICP Vaccination Group**

March 2022

Riyadul Karim

Assistant Director of Primary Care

riyad.karim@nhs.net



Steps taken to increase Covid Vaccination Uptake

- **Phase 3 COVID and Flu Vaccination Group** continues the coordination of Covid vaccination activities in Enfield and includes PCN and community pharmacy sites and stakeholders and meets fortnightly
- ICP Vaccine Workstream activity informed by intelligence provided by LBE Public Health Team.
- Focus on limiting inequality in vaccine uptake between areas of high and low deprivation, different ethnic groups, Under 40s and other groups experiencing deprivation (e.g. Black African and Black Caribbean, East European communities, GRT and homeless)
- School Vaccinations 12-15 year olds (BEH)
- Additional SMS text messages are being sent to all unvaccinated residents across Enfield

Summary of Next steps for the NHS COVID-19 Vaccination Programme

- A vaccination offer to all children aged 5 – 11 years. This offer to commence from early April.
- A vaccination offer of a spring dose at around 6 months after the last vaccine dose for adults aged 75 years and over, residents in a care home for older adults, and individuals aged 12 years and over who are immunosuppressed, as defined in the Green Book.
- This offer is expected to begin from early April and systems will need to consider how to deliver without impacting on core NHS services.
- A continued vaccination offer to those who have recently become eligible, including: at risk 5-11s, 12-15s, and newly at risk groups such as those who are pregnant, eligible severely immunosuppressed and their families or households.
- Continuous community engagement to improve confidence and promote uptake

NHS Expression of Interest Funding

Phase 3 group working with LBE, BEH, NCL CCG, LVS sites, has developed funded hyper local plan to NCL CCG that aims to:

- Improve vaccine uptake (first, second, third and booster) in those areas with lowest uptake
- Improve vaccine uptake first, second, third and booster) within those communities/populations with the lowest uptake
- Increase vaccination (first, second, third and booster) capacity locally though enhanced outreach

Schemes developed include plans for:

- **Increasing consent for school aged vaccines (BEH)**
- **Vaccine communications (LBE)**
- **PCN capacity (Evergreen surgery)**
- **East European Community Outreach (LBE)**
- **COVID-19 marshals (LBE)**
- **Gypsy, Roma, and Traveller (GRT)**
- **Pan Enfield Pregnant Women and 5-11 year olds (PCNs and North Mid)**

Enfield social media (December – January)



Followers: 4,850 (+9)

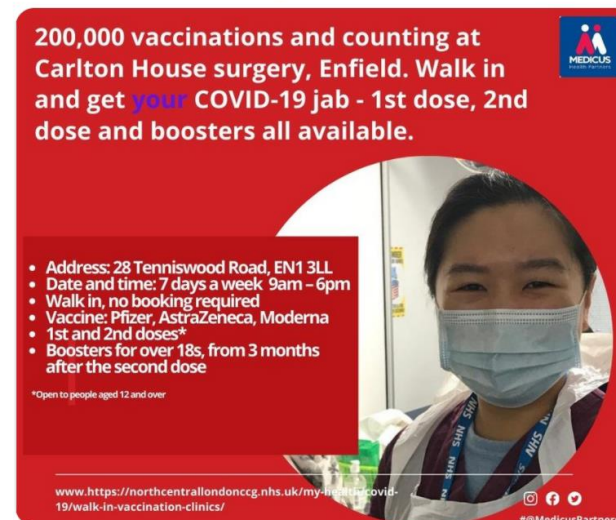
Tweets: 84

Impressions: 14,800 (+30%)

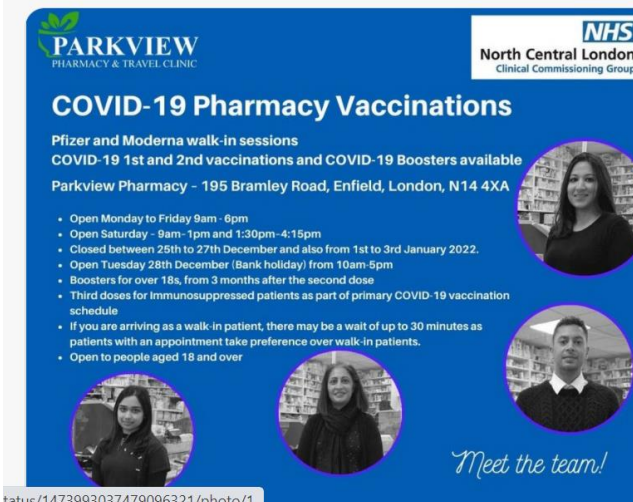
NHS North Central London CCG – Enfield @NCLC... · Dec 30, 2021 ...
Big congratulations for the 200,000 vaccinations milestone reached by Carlton House GP surgery, Enfield. #GetBoostedNow #PrimaryCareHeroes



vaccinations milestone. A huge well done to everyone involved. The team are keen to jab more of the community & keep them safe. Get your booster now! #Carltonhouse @NCLCCG_Enfield #vaccination #enfield #NHS



NHS North Central London CCG – Enfield @NCLC... · Dec 23, 2021 ...
Due your COVID-19 booster? Need a 1st or 2nd vaccination? Don't delay. Visit your local pharmacy and grab a jab. #KeepEnfieldSafe



Love your Doorstep @Loveyourdoorstep · Dec 21, 2021 ...
Tomorrow evening @ 8pm @EmmaLYDS talks to Tara & Emma from @MedicusPartners regarding improving the patient experience. facebook.com/groups/ENFIELD...



NHS North Central London CCG – Enfield @NCLCCG_Enfield · 19h ...
Aged 12 or over? Come along to the pop-up clinic taking place at Palmers Green Mosque on Sunday 9 January and get your Covid Vaccine #PalmerGreen #N13 #COVID19 #COVID19VaccineBooster #COVID19Vaccine



Covid-19 Vaccination in Enfield

Designated GP/**PCN sites** mobilised to deliver vaccination service:

- Carlton House Surgery, Medicus Health Partners
- Evergreen Surgery
- Winchmore Hill Practice
- Woodberry Practice (started Phase 3)
- Collaborative effort - Enfield GP practices, Primary Care Networks, GP Federation and commissioner support

LVS Site	Pillar	Borough	Ward	Line 1	Postcode
Carlton House Surgery	LVS (PCN)	Enfield	Town	28 Tenniswood Rd	EN1 3LL
Evergreen Medical Centre	LVS (PCN)	Enfield	Edmonton Green	1 Smythe Cl	N9 0TW
The Woodberry Practice	LVS (PCN)	Enfield	Winchmore Hill	1 Woodberry Ave	N21 3LE
Winchmore Hill Practice	LVS (PCN)	Enfield	Bush Hill Park	808 Green Lanes	N21 2SA

Designated **Community Pharmacy Sites**

- Aldermans Pharmacy, Electra Pharmacy (Alma Healthcare Centre), Atkinsons Chemist, Elgon Chemist – Ponders End, Parkview Pharmacy and Well Pharmacy

LVS Site	Pillar	Borough	Ward	Line 1	Postcode
Aldermans Pharmacy	LVS (CP)	Enfield	Palmers Green	38-40 Aldermans Hill	N13 4PN
Alma Healthcare Centre (Electra Pharmacy)	LVS (CP)	Enfield	Ponder End	1 Woodall Rd	EN3 4GS
Atkinsons Chemist	LVS (CP)	Enfield	Winchmore Hill	750 GREEN LANES	N21 3RE
Elgon Chemist - Pondersend	LVS (CP)	Enfield	Ponder End	291 High Street	EN3 4DN
Parkview Pharmacy	LVS (CP)	Enfield	Cockfosters	195 BRAMLEY ROAD	N14 4XA
Well Pharmacy - Enfield	LVS (CP)	Enfield	Enfield Highway	255-257 HERTFORD ROAD	EN3 5JL

Enfield vaccination sites map

Developed by Virginia Robins, NCL CCG Comms and Engagement, working with Riyadh Karim AD Primary Care, Laura Andrews Senior Enfield Comms and Engagement NCL CCG, Co Chairs of Phase 3 ICP group, and PCN and Community Pharmacy LVS (local vaccination sites)

Version 1 | February 2022 (subject to change)

COVID-19 vaccination sites in Enfield

Medicus Health Partners (MHP) – Carlton House Surgery

- 28 Tenniswood Road, EN1 3LL
Every day 9am – 6pm

Evergreen Surgery

- Evergreen Primary Care Centre, 1 Smythe Close, Edmonton, N9 0TW
Every day 9am – 6pm

Elgon Chemist

- 291 High Street, Ponders End, EN3 4DN
Monday to Friday 9am – 7pm,
Saturdays 9am – 6pm and
Sundays 10am – 4pm

Parkview Pharmacy

- 195 Bramley Road, Oakwood, N14 4XA
Monday to Friday 10am – 1pm, 2pm – 6pm and Saturday 9am – 4.45pm

Well Enfield Pharmacy

- 255-257 Hertford Road, EN3 5JL
Monday to Friday 9am – 1pm

The Woodberry Practice

- 1 Woodberry Avenue, Winchmore Hill, N21 3LE
Monday 1pm – 6pm, Tuesday and Thursday 9am – 5pm, Wednesday 1pm – 6pm, Saturday 9am – 1pm

Winchmore Hill Practice

- 808 Green Lanes, Winchmore Hill, N21 2SA
Variable clinic times, please contact the centre

Electra Pharmacy at MHP – Alma Healthcare Centre

- 1 Woodall Road, EN3 4GS
Monday to Friday 10am – 1pm, 2pm – 5pm

Aldermans Pharmacy

- 38-40 Aldermans Hill, Palmers Green, N13 4PN
Monday to Friday (excluding Thursday) 9am – 11.30am, 2pm – 5pm

Atkinsons Chemist

- 750 Green Lanes, Winchmore Hill, N21 3RE
Monday to Saturday 9.30am – 6pm



- Anyone **aged 12+** eligible for a COVID vaccine can walk in for ANY dose (1st, 2nd, 3rd, booster)
- Anyone **aged 16+** eligible for a COVID vaccine can walk in for ANY dose (1st, 2nd, 3rd, booster)
- Community pharmacy vaccination site (book via 119 or www.nhs.uk)

All children aged 12-15 can get a 1st and 2nd dose of the COVID-19 vaccine in school or through the NHS national booking service (dial 119 or www.nhs.uk). Children aged 5-11 who are in a clinical risk group or who live with someone who is immunosuppressed will also be eligible to get the first dose of the COVID-19 vaccine. From April 2022 **all** 5-11 year olds are eligible for the COVID-19 vaccine.